



Find your way

Student Support Navigator



Faculty of Governance and Global Affairs

Locations

Anna van Buerenplein
Anna van Buerenplein 301

Schouwburgstraat
Schouwburgstraat 2

Wijnhaven
Turfmarkt 99

*This is a publication of Leiden University,
Faculty of Governance and Global Affairs.
We have done our best to display all the
information as accurately as possible. Do
you have any suggestions or improvements?
Please let us know.*

student.universiteitleiden.nl



 [@leidenuniversityfgga](https://www.instagram.com/leidenuniversityfgga)

 Faculty of Governance
and Global Affairs

 wellbeing@fgga.leidenuniv.nl



**Universiteit
Leiden**
The Netherlands

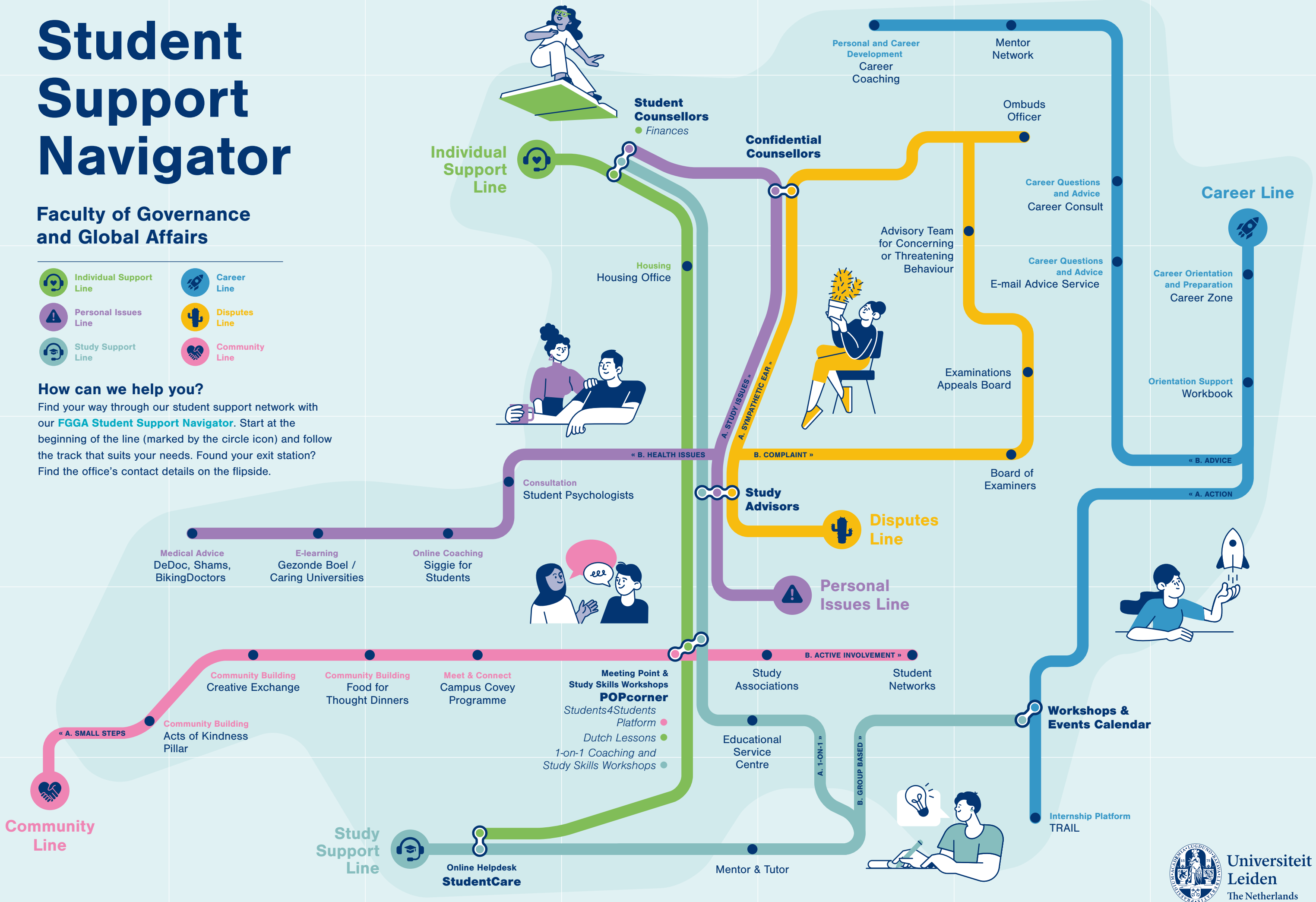
Student Support Navigator

Faculty of Governance and Global Affairs

-  Individual Support Line
-  Personal Issues Line
-  Study Support Line
-  Career Line
-  Disputes Line
-  Community Line

How can we help you?

Find your way through our student support network with our **FGGA Student Support Navigator**. Start at the beginning of the line (marked by the circle icon) and follow the track that suits your needs. Found your exit station? Find the office's contact details on the flipside.



Find your way



Navigate our student support network on the flipside. Found your exit station? You can find the contact details of the office you need right here!

Central Stations

These stations house multiple offices that can support you with different needs. Always a good starting point if you are unsure which office you need.



POPcorner

Students4Students, study support, meeting point, community, coaching and more.

1 Students4Students Platform

A group of fellow motivated students who organise Student4Student events.

2 Dutch Lessons

Free Dutch lessons you can follow together with your peers.

3 1-on-1 Coaching and Study Skills Workshops

Free 1-on-1 coaching, e-learning through

ePOPcorner, and workshops to train and improve your study skills.

- popcornerthehague@leidenuniv.nl
- +31 7800 90 79
- Beehive 0.10, ground floor



Study Advisors

Help with and advice on your studies.



Confidential Counsellors

Someone to talk to for help and support.



Workshops and Events Calendar

Find workshops related to study skills, career orientation and personal development, and events such as: Meet the Employer, Speeddating with Traineeships and the Campus The Hague Career Event.



StudentCare

Answers to all your questions about studying at Leiden University in The Hague.



Student Counsellors

Help when dealing with exceptional personal or financial circumstances.

- +31 715 27 80 25



Beehive Student Centre



Here you will find: Sports Centre "The Buzz", study and computer rooms, facilities for student organisations, Meeting Point, POPcorner.

Find us opposite Wijnhaven building!

Individual Support Line

1-on-1 support for all non-study related issues that need to be in place to make the most of your time as a student.



Student Counsellors (Finances Advice)

See Central Stations

Housing Office

Tips and a to-do list.

Help and guidance in finding a room.

- +31 7527 80 11



Contact form



Website

POPcorner

StudentCare (Healthcare Information)

For all these above: See Central Stations

Personal Issues Line

Find help to address mental and physical health concerns within the university or elsewhere.



Student Counsellors Confidential Counsellors Study Advisors

For all these above: See Central Stations

Student Psychologists

Help with issues that negatively impact your studies.

- +31 7152 78 026
- psychologen@sea.leidenuniv.nl



Siggie for Students

Accessible help from an online coach who will work together with you on any topic you want.

- siggieforstudents.nl

Gezonde Boel / Caring Universities

E-learning about a healthy physical and mental lifestyle.



Gezonde Boel



Caring Universities

DeDoc / Shams / BikingDoctors

GPs (doctor who provides general medical treatment) in The Hague who take on (international) students.

Study Support Line

Cultivate academic growth with our study support: online resources, offline advice and workshops.



StudentCare

See Central Stations

Mentor & Tutor

Referrals for all your questions about studying at Leiden University in The Hague.



Educational Service Centre

Administration of educational data, such as requests for diplomas or transcripts, questions/issues with scheduling.

- osc.fgga@fgga.leidenuniv.nl
- OSC Student Desk at the Wijnhaven building is open Monday to Thursday between 10.00 and 12.00 hrs.

POPcorner (Advice)

Study Advisors

Student Counsellors

Workshops and Events Calendar

For all these above: See Central Stations

Career Line

Use our services to help start your career: guidance, workshops, opportunities and more.



Career Zone

careerzone.universiteitleiden.nl

Workbook



Useful tips and exercises.

LINE A. ACTION

Start your career orientation now! Find useful tips and exercises to get started, and take action.

Workshops and Events Calendar

See Central Stations

Internship Platform: TRAIL



Internships from FGGA partners.

LINE B. ADVICE

Do you have questions for which you need assistance, and have you not found an answer on the Career Zone or in the workbook? Don't be afraid to ask for advice!

E-mail Advice Service

- careerservice@fgga.leidenuniv.nl

Career Consult (Advice Session)

Career Coaching (Personal Development)



Mentor Network

Get in touch with experienced alumni to ask questions about your career orientation.



Disputes Line

Explore your options in case of a dispute: voice your concerns, look for support, file a request, dispute a decision.



Study Advisors

Confidential Counsellors

For all these above: See Central Stations

Ombuds Officer

A neutral party to mediate the issue for you.

For complaints if you believe you have not been treated fairly by a university staff member or administrative body.

- ombudsfunctionaris@leidenuniv.nl



Board of Examiners

For matters such as exemption requests, combinations of elective courses, the Binding Study Advice and other requests.



Examination Appeals Board

A place to dispute a decision that has been made, for instance by the Board of Examiners.

- cbe@bb.leidenuniv.nl



Advisory Team for Concerning or Threatening Behavior

Advice and guidance about the correct steps to address/report an issue.

- adviespuntzg@sea.leidenuniv.nl



Community Line

Make friends and connect with like-minded people.



Acts of Kindness Pillar

One time contact with another student or in small groups.

Reach out to another student or small group of students. Look for the blue pillars located on the second floor of Wijnhaven and on the ground floor of Schouwburgstraat or the blue bullet board in Anna van Bueren.

Creative Exchange

Food for Thought Dinners

For all these above: See POPcorner (Central Stations)

Campus Covey Programme

Monthly meet-ups with a fixed group of 5-7 people, and with the other people in the programme.



Registration form

Study Associations

- Public Administration: B.I.L.



- Institute of Security and Global Affairs: Custodia



- Leiden University College: Fortuna



Student Networks

Networks that contribute to community building and raising awareness about specific topics.

