

# MSc in Psychology – Social and Organisational Psychology

Dr. Hester Ruigendijk



Universiteit  
Leiden

A woman with long brown hair, wearing a red floral patterned jacket over a white top, is seated at a white table. She is holding a small green card in her right hand. On the table in front of her are several orange and purple sticky notes. The background is a bright, indoor setting with a ceiling light fixture.

# Index

1. Programme overview
2. Programme schedule
3. Mandatory courses
4. Electives
5. Thesis
6. Internship
7. Planning your master's programme

# A quick overview

## Programme structure

- Mandatory courses 20 EC
- Elective courses 5 EC
- Thesis 20 EC
- Internship 15 EC

## Degree

- MSc in Psychology

## Type of programme

- Full time
- 60 EC

## Starts in

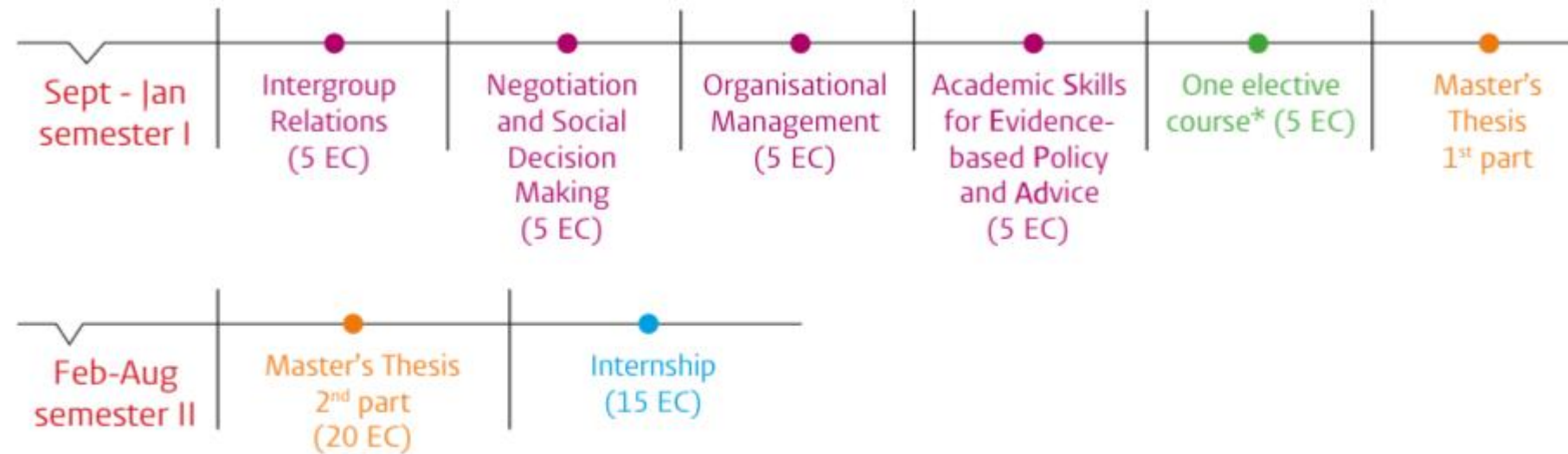
- September
- February

# Programme outline

## Course information

### Psychology (MSc): Social and Organisational Psychology

#### September intake



● Core course

● Internship

● Master's Thesis

● Elective course

\* Recommended elective courses: Motivation Power, and Leadership; Environmental Psychology; Psychology of Economic Behaviour; Social Animals at Work. See Prospectus for the total list of available electives.



# Mandatory courses (20 EC)

- Academic Skills for Evidence-Based Policy and Advice (5 EC)
- Negotiation and Social Decision Making (5 EC)
- Intergroup Relations (5 EC)
- Organisational Management (5 EC)

(Please note: attendance is mandatory, courses are taught twice annually, but follow all mandatory courses during *your* first semester!)

# Academic Skills for Evidence-Based Policy and Advice

How do you ask the right questions when you are developing advice, how do you research and analyze those questions and how do you communicate them?

Semester 2, Block 1 & 2



# Negotiation and Social Decision Making

How do we serve our interests and the interest of others in interdependent situations?  
Negotiation, conflict, decision making.

Semester 2, Block 1



# Intergroup Relations

How do people in groups behave towards other groups? Conflict, integration, stereotyping, stigmatization.

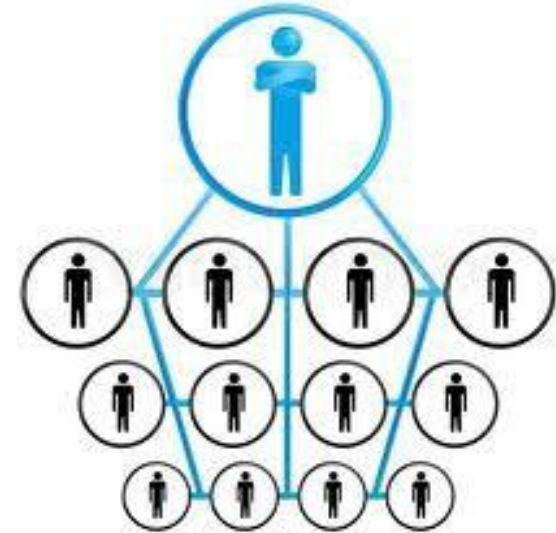
Semester 2, Block 1



# Organisational Management

How can we use insights from social psychology to understand the functioning of organisations?  
Human resource management,  
corporate social responsibility.

Semester 2, Block 2



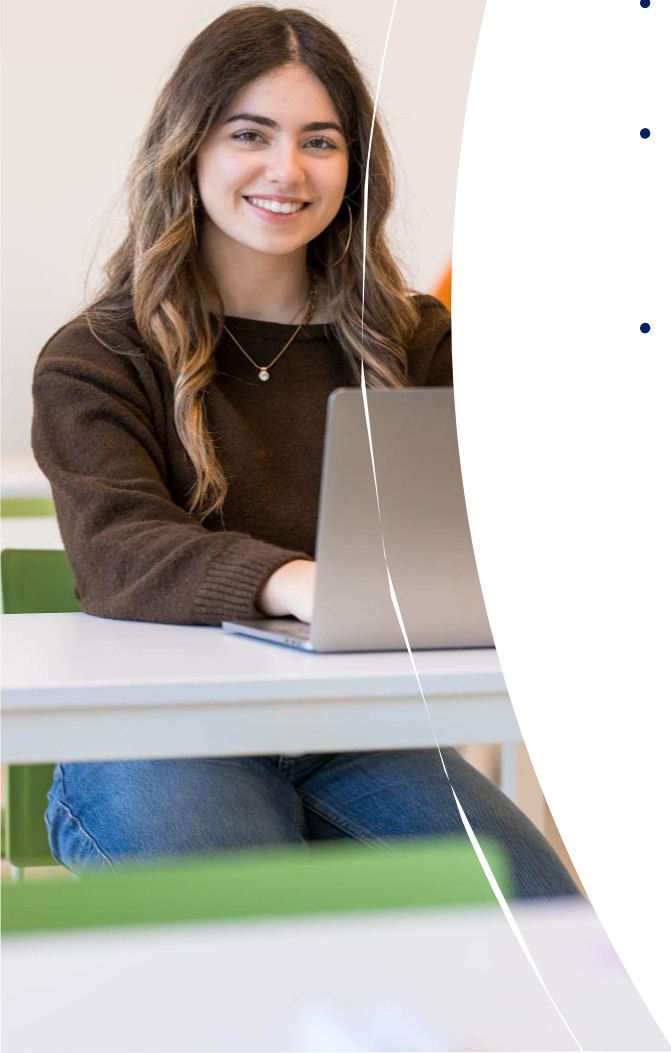
# Electives (5 EC)

- Psychology of Economic Behaviour (semester 2; 5 EC)
- Social Animals at Work (semester 2; 5 EC)
- Motivation, Power and Leadership (semester 1; 5 EC)
- Environmental Psychology (semester 1; 5 EC)

You can also choose other electives (such as Trainers Course Communication Skills) but watch out for schedule conflicts.

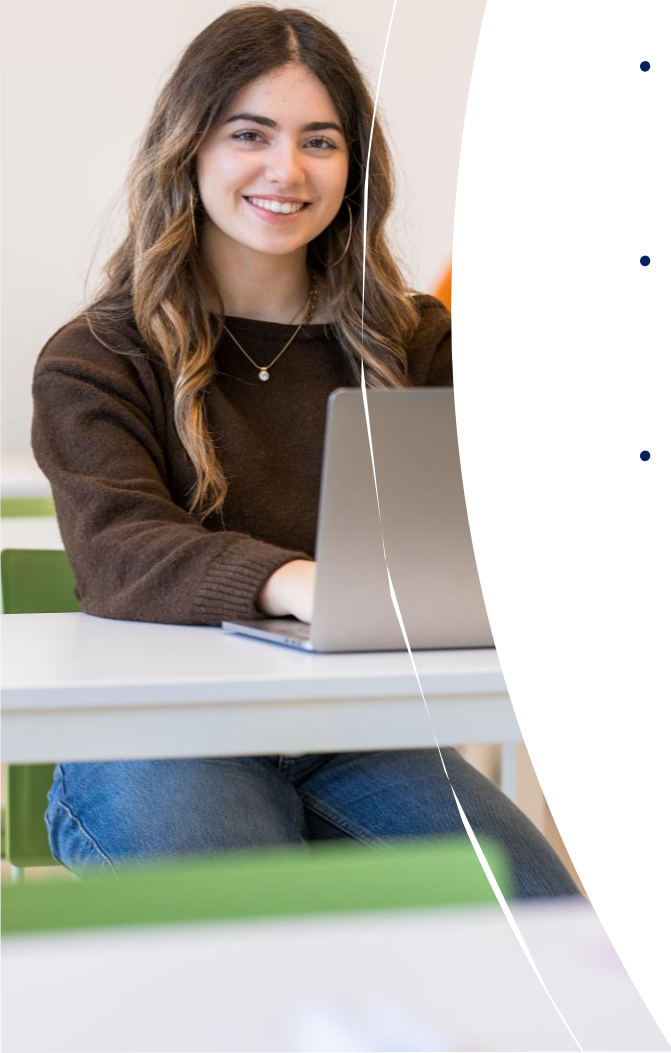
# Thesis

- Thesis written on a research project.
- Research projects will be done with fellow students, but the master thesis will be written individually.
- Learn to integrate and apply the knowledge and skills acquired during courses.



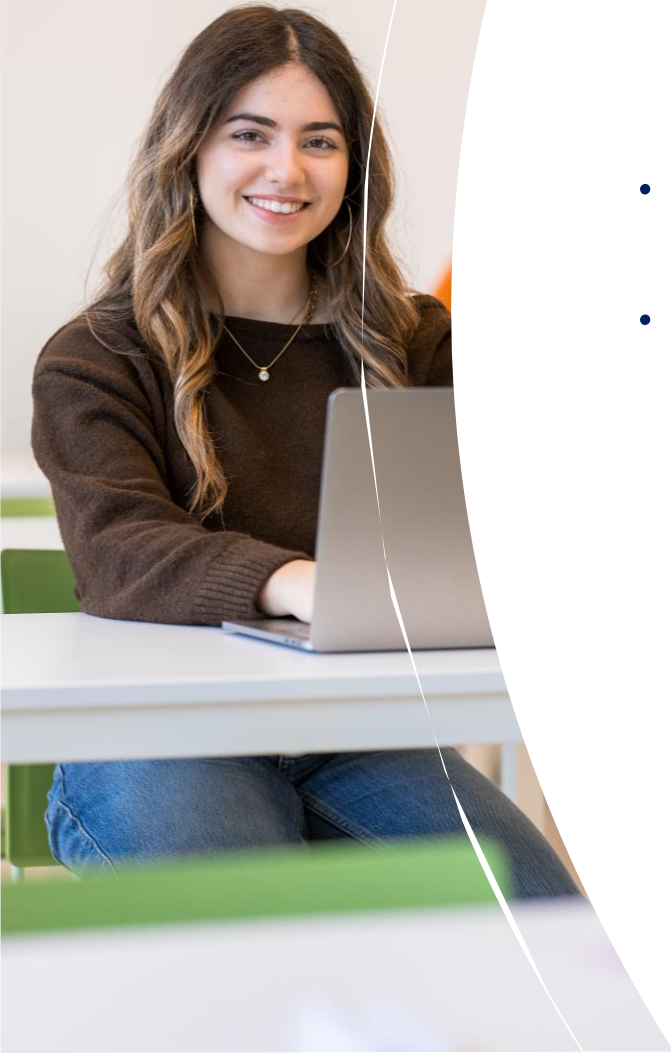
# Thesis

- Staff members offer a variety of thesis topics
- No enrollment via uSis, mid-September you will receive an invitation via e-mail to select your preferred top 5
- Based on your top-5s, an algorithm allocates the topics
- As soon as you know your topic, contact your master thesis supervisor



# Thesis

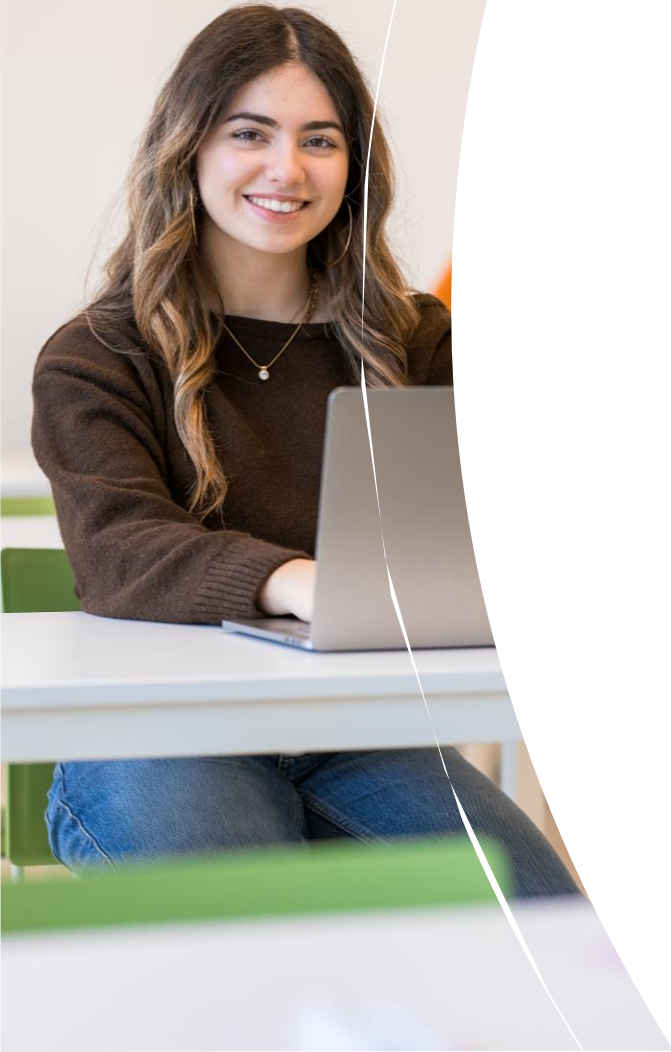
- Topics are offered based on the research expertise of staff members to ensure high quality supervision
- Read the website and Brightspace very well
- Your thesis supervisor is your mentor



# Thesis

## Schedule

- Half November: first meeting
- T.b.d. (e.g. end of January): finish research proposal
- T.b.d. (e.g. end of February): write intro
- T.b.d. (e.g. beginning of March): collect data
- T.b.d.:(e.g. half/end April) methods, results discussion
- Half May: finish thesis





# Internship

- Familiarizing yourself with the professional activities of a S&O psychologist
- ± start half May (min 420 hours)
- You must find an internship yourself
- You should have finished all obligatory courses and completed the data collection for your Master Thesis
- Your Master Thesis supervisor is also your internship supervisor
- Start in time with looking for an internship!



# Thesis and Internship on Brightspace

<https://brightspace.universiteitleiden.nl/>

- Log in with your ULCN-account
- You will be automatically enrolled for the course Master Psychology: SOP & ECP
- Find useful information about the Master Thesis and the Internship (e.g., requirements, guidelines, tips and tricks)



# Before the start of the programme

## Sign up for courses

- When?
  - Course planning: *June and November*
  - Course enrolment: *July and December*
- Instructions on student website of Leiden University

## Be present at the Master's Kick Off

- When?
  - September start: *Thursday 27 August 2026*
- We expect you to attend the Kick Off. More information will follow via email

**We are looking forward to  
welcoming you at Leiden University!**



**Universiteit  
Leiden**